

2021 HURRICANE GUIDE



During storm season and throughout
the year, Lakeland Electric is ready.

SOURCES FOR EMERGENCY INFORMATION

Citizens Information Line

863-401-2234 Local / 866-661-0228 Toll Free

American Red Cross Mid-Florida Chapter

863-294-5941

United Way Information Referral Service

211 / 888-370-7188 or Text Zip Code to 898-211

Polk County Animal Services

863-577-1762

Federal Emergency Management Agency

800-621-3362

National Weather Service

813-645-2323

IMPORTANT WEBSITES

Ready.gov

LakelandElectric.com

Polk-County.net

LakelandGov.net

Weather.gov

POLK COUNTY

Polk County Emergency Management

863-298-7000 Local / 800-780-5346 Toll Free

Polk County Sheriff

863-298-6200

Polk County Special Needs Program

(Pre-registration) 863-298-7027

OFFICIAL EMERGENCY BROADCASTING RADIO STATIONS

WONN - 1230 AM & 107.1 FM

WPCV - 97.5 FM

The stations listed above are designated as the primary emergency broadcast stations for Polk County. **Lakeland Electric** does its best to keep these and other stations informed on the most up-to-date news regarding power outages.

Please do not call these stations to report outages or ask for utility status information!

Travelers Information - 1610 AM

IMPORTANT CITY OF LAKELAND PHONE NUMBERS

Automated Outage Reporting

866-834-4248

Customer Service Call Center

863-834-9535

Monday - Friday, 7:30 a.m. - 6:00 p.m. (EST)

Fallen Power Lines/Water Outages

866-834-4248

TDD Number (Hearing Impaired)

863-834-8333

Medically Essential Program

863-834-1555

Tree and Lawn Debris Removal

863-834-8773

Lakeland Police Department

(Non-Emergency): 863-834-6900

Lakeland Fire Department

(Non-Emergency): 863-834-8200

HURRICANE GUIDE 2021

TABLE OF CONTENTS

OUTAGES

INTERACTIVE OUTAGE MAP

OUTAGE NOTIFICATION ALERTS

REPORTING AN OUTAGE

STORMS: BEFORE, DURING, & AFTER

BEFORE HURRICANE SEASON

WATCH AREA VS. WARNING AREA

AFTER THE STORM PASSES

CUSTOMER RESPONSIBILITIES

7-DAY EMERGENCY KIT

TAKING CARE OF YOUR PET

IF YOUR POWER GOES OUT

PORTABLE GENERATOR SAFETY

TREE DEBRIS

WATCH OUT FOR ENERGIZED LINES

LAKELAND ELECTRIC'S RESPONSIBILITIES

RESTORATION PRIORITY

WHO IS RESPONSIBLE FOR REPAIRS?

POLK COUNTY

EVACUATION RECOMMENDATIONS

POLK COUNTY SHELTER REQUIREMENTS

POLK COUNTY SPECIAL NEEDS PROGRAM

FREQUENTLY ASKED QUESTIONS

FREQUENTLY ASKED QUESTIONS

PERSONAL EMERGENCY INFORMATION

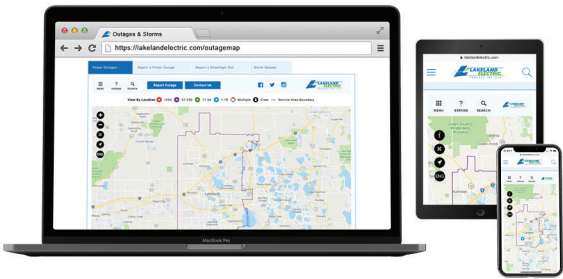
POLK COUNTY PRIMARY SHELTERS

ACTIVITIES FOR KIDS

INTERACTIVE OUTAGE MAP

Stay informed with our outage map. The map provides customers with detailed outage information, estimated time of restoration, crew status and live weather radar.

LakelandElectric.com/outagemap



OUTAGE NOTIFICATION ALERTS

Customers who list their mobile phone number will be notified by text, phone or email when power is out at their home. That way, even if you're not home, you know what's happening.

With **Outage Notification Alerts**, we'll send you outage status updates and let you know how long it will take to restore your power.
Text REG to 21592 to register.

Change your preferences or opt-out of this service in your online account settings at **LakelandElectric.com/MyAccount**, or by calling **863-834-9535**.

*Message and data rates may apply.

REPORTING AN OUTAGE

First, determine if the outage is a household problem by checking all circuit breakers and fuses. You may be able to restore your own power by resetting the breakers or replacing the fuses.

Our smart meter system lets us know the moment your home or business is out of power without you needing to call. This helps us respond quickly to problems and get your power back on as quickly and safely as possible.

You can report outages on **Lakeland Electric's** automated system at **863-834-4248**, available 24 hours a day, 7 days a week. (Out-of-area, please call toll-free at 1-866-834-4248.) Or **text OUT to 21592**.

Most importantly: Bypassing this system to speak to a representative **will not** make your restoration faster.

Lakeland Electric's automated telephone system can recognize your phone number when you call, matching it to your address to help us locate outages quickly.

Always remember, if there are downed power lines or potential hazards **call 911**.

BEFORE HURRICANE SEASON

Lakeland Electric needs your current phone number on file for the automated outage system to work.

Call 863-834-9535 to verify your phone number with a customer service representative or go online to LakelandElectric.com/MyAccount.

Update your **7-Day Emergency Kit**
(Please refer to the checklist on page 9).

Determine safe evacuation routes.

Identify where the closest shelter is, especially if you require special medical or pet-friendly accommodations.

Have a plan for essential medicine or medical equipment that require power, such as oxygen concentrator, CPAP machine, insulin, etc.

If special medical attention is needed, call the Polk County Special Needs Program to pre-register at **863-298-7027**.

Review your insurance policy.

Make sure your yard is tidy. For example, trim trees and shrubbery and clear clogged gutters.

Identify your fuse box or electric panel and know how to shut it off in case you need to evacuate.



WATCH AREA VS. WARNING AREA

A Watch Area means the potential exists for the development of severe weather. A Warning Area, however, indicates severe weather is imminent in your area or is already occurring. Tune in to Polk County's emergency broadcasting stations **WONN 1230 AM & 107.1 FM / WPCV 97.5 FM** to stay up to date on severe weather changes.

If you are under severe weather watch, take action and prepare!

Make sure family vehicles have been serviced and are fueled up.

Have extra cash on hand.

Make sure cell phones are charged.

Bring light-weight yard objects, such as garbage cans or furniture, inside.

If you have a boat, move it close to the house. If it is in the water, check the mooring lines.

Put important documents in a water-tight container.

Check battery-operated radio, TV or NOAA weather radio.

Prepare to cover all windows with plywood.

Unplug major appliances.

Fill your bathtub and other containers with water. It can be used for cleaning, washing dishes, or flushing the toilet.

If you are under a warning always be prepared to evacuate at a moment's notice!

If you're evacuating, take important documents with you.

If you evacuate, shut off electric, gas, and water at the main panel(s).

Call the **Citizens Information Line** to make sure shelters are open at **863-401-2234 Local / 866-661-0228 Toll Free.**

Do not stay in a mobile or manufactured home.

Notify family members that you have evacuated.

WHEN THE STORM HITS

When the storm hits, stay indoors and away from windows. If the eye of the storm passes over your area, do not go outside during the calm - the calm from the eye of the storm is usually brief.

AFTER THE STORM PASSES

Severe storms can cause damage to limbs or entire trees. Broken limbs and fallen trees are a major cause of damage to power lines and utility poles. Restoring power to our customers will be our primary focus. Please be patient as we evaluate and prioritize our workload.

Do not attempt to trim any limbs near the power lines.

Do not attempt to pull out debris from under or near fallen power lines.

Do not assume a fallen power line has no electricity; **fallen power lines can be deadly.**

In a time of disaster, a fast recovery is our goal, but **safety is our first priority**. Annually, vegetation debris accounts for 12% of all outages. When a storm with high winds occurs, that percentage can go up dramatically. Even though **Lakeland Electric** is ahead of the curve when it comes to trimming trees near power lines, vegetation debris can travel longer distances during a storm and cause electric outages.

If possible stay indoors; debris clean up can wait until crews are finished restoring power.

Check for electrical damage inside your home, such as frayed wires, sparks, or the smell of burned insulation. If you find damage, **do not turn the power on**. Call a licensed electrician.

Drive or walk as little as possible to avoid flooded areas and down power lines.

Don't drink tap water until you receive the official word that it's safe. Always boil water used for cooking, drinking, etc. **Use your emergency supply.**

Replenish your 7-Day Emergency Kit (batteries, water, non-perishable food, etc.).

Following a hurricane, it may take several days to restore services and clear roads. It may even take months to remove all debris from neighborhoods. We can't guarantee things will be fixed overnight, but we can guarantee we won't rest until they are.



7-DAY EMERGENCY KIT

Plan to be self-sufficient for at least 7 days. Anticipate not having access to any utilities. To ensure the comfort of your family, assemble the following items using this **7-Day Emergency Kit Checklist**:



Battery-operated items (NOAA radio, flashlight, etc.) and extra batteries.



Canned, non-perishable food, and can opener. Include specialty food if needed.



Drinking water in non-breakable containers (one gallon per person per day).



Fully charged cell phone, car charger, and/or back-up battery charger.



First aid kit, prescription medicine, masks, and personal aids such as eyeglasses, hearing aids, etc.



Identification, credit cards, extra cash, extra car keys, and valuable papers and policies in a waterproof container.



Special items for infant, elderly, disabled, etc.



One sleeping bag or blanket per person.



A change of clothes and pair of shoes per person.



TAKING CARE OF YOUR PET

Polk County has three pet-friendly shelters.

Tenoroc High School – 4905 Saddle Creek Rd., Lakeland, FL

Lake Region High School – 1995 Thunder Rd., Eagle Lake, FL

Haines City High School – 2800 Hornet Dr., Haines City, FL

Due to space limitations, the sites will be strictly pet-friendly and will be limited to providing shelter for **ONLY dogs, cats, birds, and their owners. Pet shelter requirements include:**



Bring your complete shot records for each pet, which will be reviewed upon arrival at the shelter.



Have an airline-approved carrying case for your animal, in which each animal will remain for the duration of their stay.



Make sure to bring food for your pet for at least a three-day period.



Collar with tags and leash.



Current photo of your pet with name, address, and email on the back.



Cat litter, liner with pan, trash bags, and scoop.



Toys and other comfort items.



IF YOUR POWER GOES OUT

Keep flashlights and spare batteries in an easy-to-locate area that's safe to enter in complete darkness.

Check all circuit breakers and fuses to make sure the problem is not in your home.

Check the outage map for restoration time estimates. Our smart grid system notifies us when you are out of power. www.lakelandelectric.com/outagemap.

If you don't see your outage on the map text OUT to 21595 or call the Automated Reporting Line at 866-834-4248. Only report your outage once.

Leave the doors of freezers and refrigerators closed except when you need an item.

Turn off or disconnect an electric range or any other heating or cooking device you were using

Do not store items on top of a heater, range, or other cooking devices.

Leave all electrical appliances and lights turned off except for one light in a location that will indicate the return of service.

Turn off battery backup systems on computers to conserve battery power.

Keep blinds and curtains closed to help reduce the interior heat of your home.

All electric garage door openers have manual releases or manual operators.

After your service is restored check your breaker panel or fuse box to ensure that individual breakers or fuses do not need to be reset.

PORTABLE GENERATOR SAFETY

Portable generators can be deadly to you and our crews!

Always:

- Keep children away from generator.
- Run a generator in an open, well ventilated area.
- Use good condition electrical cords, rated for the current required by your connected devices.
- Use an isolation device between your generator and Lakeland Electric's service conductor.
- Read and follow the generator owner's manual.
- Have a qualified, licensed electrician make any electrical wiring modifications.
- Call your local electrician if you have any questions.
- Perform proper generator maintenance.

Never:

- Operate a generator indoors, within an enclosed space. Generator engines emit deadly carbon monoxide fumes that are odorless and can kill.
- Feed power from a generator directly into your electrical system or any wall outlet. This type of connection can cause a dangerous electrical backfeed into Lakeland Electric's power distribution system that can cause **serious injury or death** to Lakeland Electric's repair personnel!
- Operate a generator near combustible materials or expose it to water or rain.
- Leave excessive lengths of cord coiled while carrying current.
This can cause a fire!
- Refuel a generator while it's running; allow it to cool before refueling.
- Store fuel indoors.
- Leave a running generator unattended.



TREE DEBRIS

Tree debris on your property is your responsibility. Our crews are responsible to clear limbs only as needed to repair the high voltage power lines.

To arrange for a bulk pick-up in the City of Lakeland jurisdiction, call our Solid Waste Office **863-834-8773**. If your house is in Polk County jurisdiction, call Polk Waste Wise **863-284-4319**.

Crews will not be able to organize or remove the tree trimming debris from your property.

Your solid waste provider may have specific requirements for debris disposal.

Please do not stack or pile debris near utility poles or transformers.

If a tree poses a danger to your electric service entrance cable, it may be necessary to **temporarily** disconnect the service cable. There is no charge for this service. Disconnecting the service cable will provide a safety zone so a private tree service can proceed with the tree work. Consider hiring a qualified professional to trim or remove storm damaged trees near your house.

Do not pay in advance for tree trimming or debris removal.

Ask for proof of insurance and verify the coverage with the insurance company.

Get more than one estimate.

WATCH OUT FOR ENERGIZED LINES

Always remember, power lines are deadly! Stay clear of them!

Report down power lines to the automated system **866-834-4248**. It's impossible to tell if a power line or any other line is energized by just looking at it. Treat all lines as if they were energized. Never go near down power lines and always treat them as energized and extremely dangerous.

If a down power line is arching and sparking, call **911**.

Do not touch or move any object in contact with or near a down power line.

Do not trim trees or remove debris around a down power line.

Do not step in water puddles, in case a down line is in the water.
You could get electrocuted!

IDENTIFYING DOWNED POWER LINES

During major storms and hurricanes, **Lakeland Electric** may have more downed power line locations than crews can immediately get to and repair. For these locations, special warning tape will alert First Responders and the general public that there is a potential hazard and to stay away. As these locations are identified, and crews become available, they will perform whatever work is needed to make the location safe.

**COMMUNICATIONS
CABLE DOWN - STAY AWAY**

**CABLE DE COMUNICACIONES CAIDO
MANTENGASE ALEJADO**

**ELECTRIC WIRE DOWN
STAY AWAY**

**ALAMBRE ELECTRICO CAIDO
MANTENGASE ALEJADO**



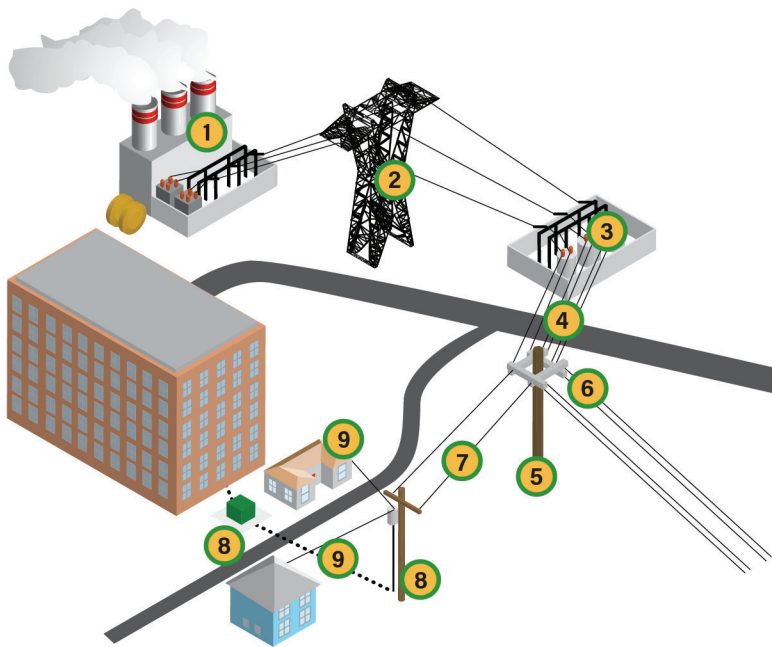
RESTORATION PRIORITY

After we repair **Lakeland Electric's** facilities and the lines that carry electricity from them, we restore customers who provide essential services to the community, such as hospitals, police stations, and fire departments. Then, we repair damage that will return power to the greatest number of customers in the least amount of time. Finally, we restore small groups and individual customers.

Restoration depends on the weather, available crews, material, and extent of damage to the area.

HOW WE RESTORE POWER

This diagram illustrates the major components the electrical system uses to deliver electricity to **Lakeland Electric** homes and businesses.



1. Power plant

2. Transmission Lines (supplies large number of customers)

3. Substation (lowers voltage)

4. Main Distribution Line (delivers power to large subdivisions & commercial areas)

5. Power Pole

6. Fuse

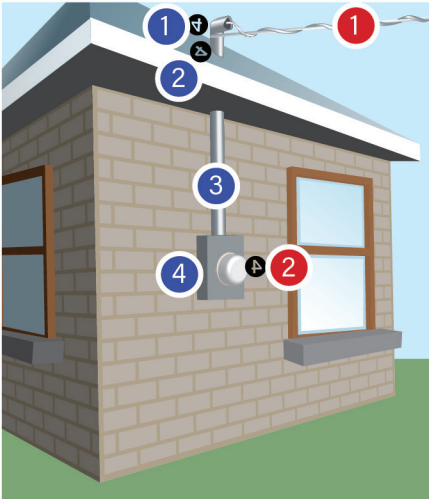
7. Local Distribution or Tap Line (the type of line that runs along residential streets)

8. Transformer (reduces service voltage to individual households & businesses)

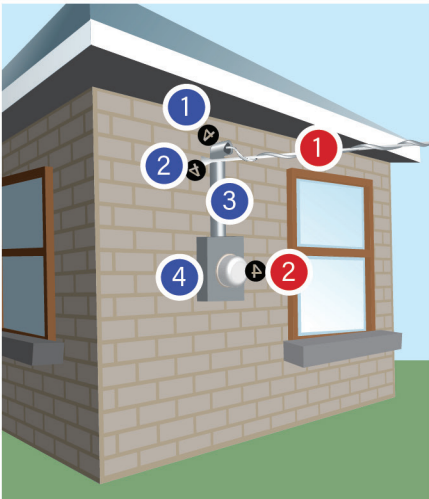
9. Service Line (delivers power to individual homes)

WHO IS RESPONSIBLE FOR REPAIRS

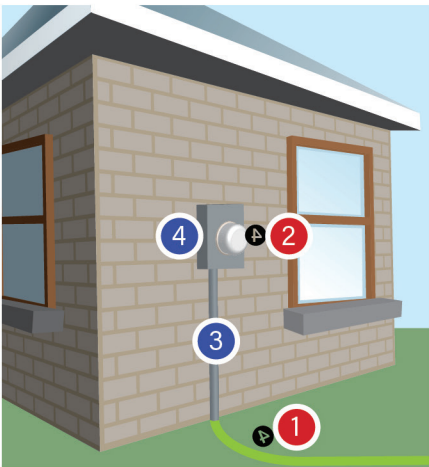
If your electrical components are damaged, you may be responsible for repairs. Identify your type of service connection below to learn **your** responsibilities, indicated in **blue** and **Lakeland Electric's** responsibilities indicated in **red**.



- 1. Weather Head
- 2. Attachment Hardware
- 3. Riser
- 4. Meter Can
- 1. Service Line
- 2. Meter



You must repair damage to your home's electric system before **Lakeland Electric** can restore your power. If you feel your home may be unsafe to carry power, call a licensed electrician. We're not permitted to repair damage to other electrical wiring, the weather head, or your piping.



EVACUATION RECOMMENDATIONS

Polk County Emergency Management recommends in-place shelter as the primary option during a disaster. For those unable to remain in place, **especially those in mobile homes**, the remaining choices should be considered in order of preference. Whichever of the following options you choose, be sure to have a **7-Day Emergency Kit** assembled and ready. Have a plan in place and execute it as soon as practical before the disaster hits.

The recommended options are:

In-place shelter - If possible, plan to remain in residence during the emergency.

Evacuate to friend's or relative's residence - if forced to evacuate, it is less traumatic for all concerned to be sheltered with familiar people, in more comfortable surroundings.

Evacuate the area - other people leaving the areas in the projected path of the storm will also be on the road; leave at least 2-3 days before the storm is expected to strike.

Evacuate to a hotel/motel - make arrangements early as rooms will fill quickly with other evacuees.

Evacuate to a public shelter - call ahead to make sure the shelter is open.

POLK COUNTY SHELTER REQUIREMENTS

All shelters are **not** automatically activated for each possible emergency. Shelters are opened as they are needed. They are not preassigned by geographic area.

For shelter information, monitor local radio & TV or call the Citizens Information Line **863-401-2234** local or **866-661-0228** toll free.

Have a **7-Day Emergency Kit** ready to take with you.

Pets are allowed at designated pet-friendly sites. Call the Citizens Information Line for a listing and openings.

NO WEAPONS and NO ALCOHOLIC BEVERAGES

POLK COUNTY SPECIAL NEEDS PROGRAM

Because utilities cannot guarantee continuous power during a storm or hurricane, it is recommended that anyone using medical equipment requiring electric service make prior arrangements for back-up power or plan to relocate to a hospital or other facility.

The Special Needs Program is designed to provide shelter at Special Needs Shelters for residents with medical or physical conditions and/or dependent on medical electrical equipment, who require assistance during an emergency.

Polk County also provides transportation to public shelters and pet-friendly shelters for those unable to evacuate on their own.

Pre-registration in the **Special Needs Program**, for a special needs shelter and/or transportation only, is preferred. **Call 863-298-7027 to pre-register.***

* More information and the Special Needs Registration Form can be found at www.polk-county.net/emergency-management/special-needs

Polk County Special Needs Shelters:

McKeel Academy of Technology- 1810 W. Parker St., Lakeland, FL

Ridge Community High School – 500 Orchid Dr., Davenport, FL

Polk County Health Dept. (Bartow Specialty Care Clinic) – 1255 Brice Blvd., Bartow, FL



FREQUENTLY ASKED QUESTIONS

Q. Why do Lakeland Electric crews leave my neighborhood and I still don't have power?

A. Before we begin repairs, personnel are sent to survey storm damaged areas. This speeds up restoration and helps us immediately address any dangerous situations. **Damage Assessment Teams** are trained to assess and determine the priority and type of crew needed to make repairs. They arrange for tree and pole crews as needed, so line crews can repair the lines. We may need to work elsewhere to fix the problem that is affecting your neighborhood.

Q. Why does my neighbor have power and I don't?

A. Damage can affect main power lines, individual circuits, and or equipment. Your home could be on a different circuit or piece of equipment than your neighbor, causing you to be out of power and not your neighbor. It is also possible that your home needs internal electrical repairs before you can receive service.

Remember to always check your main breaker or fuse panel to see if you can reset the breaker or replace a fuse to restore power yourself.

Q. How long will I be without power?

A. We work aggressively to restore power as quickly and safely as possible. If necessary, we also bring in crews from other areas to assist. Even with all this, it is very difficult to guarantee or even estimate when your service will be restored because of variables like weather, equipment, etc.

Q. Does Lakeland Electric ever disconnect power to facilities because of anticipated damage or flooding?

A. Lakeland Electric does not de-energize facilities because of anticipated damage such as flooding or high winds. The protective, disconnect devices on all electrical equipment remain energized until adverse conditions cause them to shut off. The devices will not be switched on until they're inspected to ensure safe re-energizing.

Q. What circumstances might prohibit Lakeland Electric from turning the power back on?

A. Once winds reach 40 miles per hour, Lakeland Electric does not attempt to restore service when conditions endanger the safety of employees. After the storm passes, assessments are made and crews are deployed as soon as possible.

Q. What is the difference between overhead and underground electric service?

A. Overhead service is mostly exposed to high winds and flying debris. Underground facilities are subject to flooding or damage by uprooted trees. Both have unique complexities involved with restoration.

Q. Will my service be turned off if I am unable to pay my utility bill due to the hurricane?

A. If a hurricane approaches the service territory, the utility suspends cut-offs for the affected area. Cut-off and collection activity resume upon returning to normal business operations.

Q. What should you do when a traffic light is completely out?

A. Any intersection with a traffic signal that is completely dark should be treated as a stop sign intersection. Yield to the driver on the right if you reach the intersection at the same time as another vehicle. Yield to any vehicle that reaches an intersection before you.

Q. What if I incur significant damage to my home or business that requires me to temporarily or permanently relocate?

A. Contact **Lakeland Electric Customer Service** by calling **863-834-9535**. You can also update your information online at **www.LakelandElectric.com/MyAccount**.

PERSONAL EMERGENCY INFORMATION PHONE & ACCOUNT NUMBERS

Utility Company _____ Acct. # _____

Insurance Company _____ Acct. # _____

Shelter Locations _____

Evacuation Routes _____

Important Phone Numbers & Addresses _____



POLK COUNTY PRIMARY SHELTERS

Lakeland

Combee Elementary School	2805 Morgan Combee Rd., Lakeland, FL
Dr. N.E. Roberts Elementary School	6600 Green Rd., Lakeland, FL
George Jenkins High School	6000 Lakeland Highlands Rd., Lakeland, FL
Highlands Grove Elementary School	4510 Lakeland Highlands Rd., Lakeland, FL
Kathleen Elementary School	3515 Sheretz Rd., Lakeland, FL
Kathleen High School	1100 Red Devil Way, Lakeland, FL
Lake Gibson Senior High School	7007 N. Socrum Loop Rd., Lakeland, FL
Lakeland Highlands Middle School	740 Lake Miriam Dr., Lakeland, FL
Lincoln Avenue Academy	1330 N. Lincoln Ave., Lakeland, FL
McKeel Academy of Technology (Special Needs)	1810 West Parker St., Lakeland, FL
Philip O'Brien Elementary School	1225 E. Lime St., Lakeland, FL
R. Bruce Wagner Elementary School	5500 Yates Rd., Lakeland, FL
Rochelle School of the Arts	1501 Martin L. King Jr. Ave., Lakeland, FL
Scott Lake Elementary School	1140 E. County Rd., 540A, Lakeland, FL
Sleepy Hill Elementary School	2285 Sleepy Hill Rd., Lakeland, FL
Southwest Elementary School	2650 Southwest Ave., Lakeland, FL
Tenoroc Senior High School (Pet Friendly)	4905 Saddle Creek Rd., Lakeland, FL

Auburndale

Auburndale High School	1 Bloodhound Trail, Auburndale, FL
Jere L. Stambaugh Middle School	226 N. Main St., Auburndale, FL
Walter Caldwell Elementary School	141 Dairy Rd., Auburndale, FL

Mulberry

Mulberry Middle School	500 S.E. 9th Ave., Mulberry, FL
Purcell Elementary School	305 N.E. First Ave., Mulberry, FL

Bartow

Bartow High School	1270 S. Broadway Ave., Bartow, FL
Stephens Elementary School	1350 N. Maple Ave., Bartow, FL
Polk County Health Dept. Specialty Care Units (Special Needs)	1255 Brice Blvd., Bartow, FL
Spessard L. Holland Elementary School	2342 E.F. Griffin Rd., Bartow, FL

Haines City

Alta Vista Elementary School (Pet Friendly)	801 Scenic Hwy., Haines City, FL
Haines City High School	2800 Hornet Dr., Haines City, FL
Sandhill Elementary School	1801 Tyner Rd., Haines City, FL
Shelley S. Boone Middle School	225 S. 22nd St., Haines City, FL

Winter Haven

Chain of Lakes Elementary	7001 CR. 653, Winter Haven, FL
Jewett School of the Arts	2250 8th St. N.E., Winter Haven, FL
Winter Haven High School	600 6th St. S.E., Winter Haven, FL

Lake Alfred

Karen M. Siegel Academy	935 Evenhouse Rd., Lake Alfred, FL
-------------------------	------------------------------------

Lake Wales

Spook Hill Elementary School	321 Dr. J. A. Wiltshire Ave. E., Lake Wales, FL
------------------------------	---

Davenport

Citrus Ridge Academy	1775 Sand Mine Rd., Davenport, FL
Davenport School of the Arts	4751 N. CR 547, Davenport, FL
Horizons Elementary School	1700 Forest Lake Dr., Davenport, FL
Loughman Oaks Elementary School	4600 US Hwy. 17 92 N., Davenport, FL
Ridge Community High School (Special Needs)	500 Orchid Dr., Davenport, FL
Ridgeview Global Studies Academy	1000 Dunson Rd., Davenport, FL

Eagle Lake

Lake Region High School (Pet Friendly)	1995 Thunder Rd., Eagle Lake, FL
Pinewood Elementary School	1400 Gilbert St., Eagle Lake, FL

Poinciana

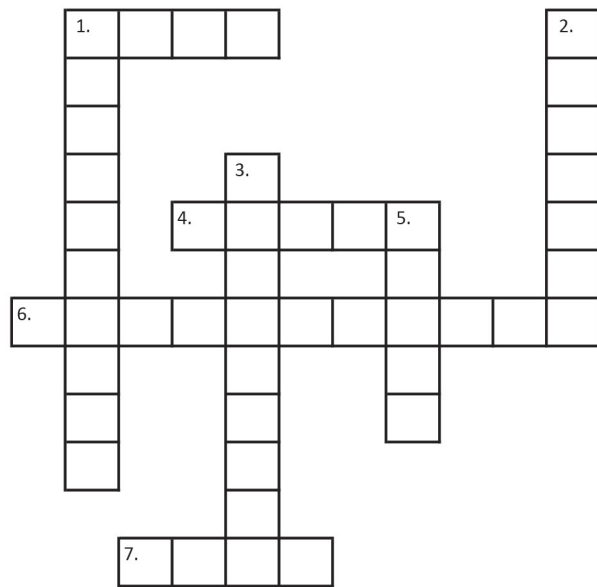
Lake Marion Creek Middle School	3055 Lake Marion Creek Dr., Poinciana, FL
Laurel Elementary School	1851 Laurel Ave., Poinciana, FL
Palmetto Elementary School	315 Palmetto St., Poinciana, FL

Polk City

Donald Bronson Community Center	124 Bronson Trail, Polk City, FL
---------------------------------	----------------------------------

Crossword

Solve this puzzle with items from your 7-Day Emergency Kit.



Across:

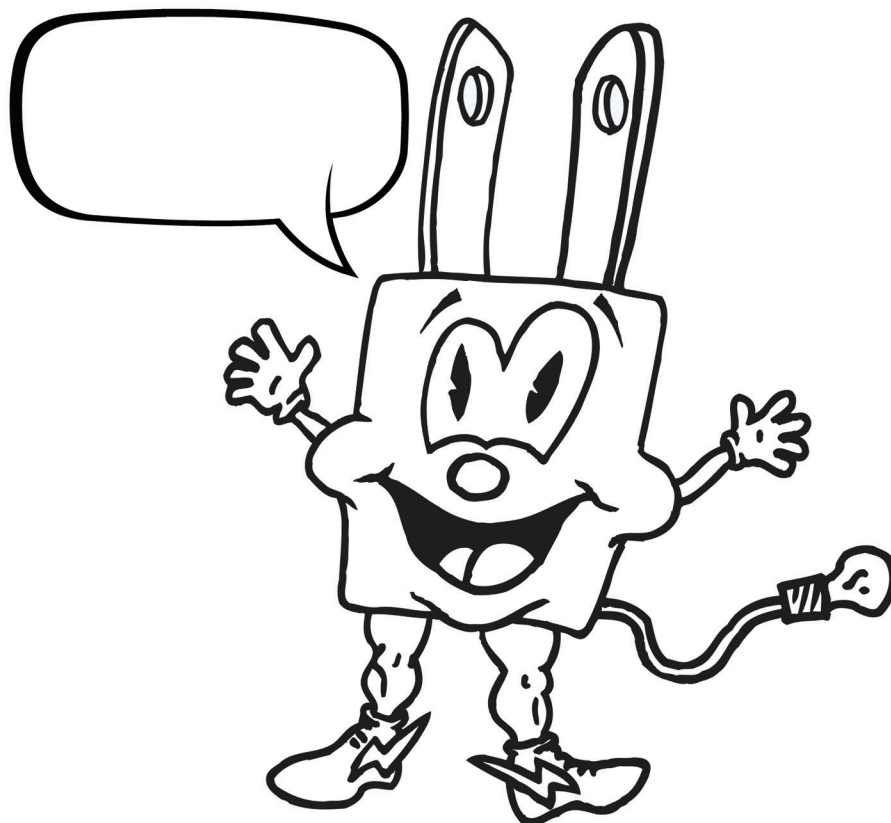
1. Sometimes requires a can opener.
4. Liquid for drinking and bathing.
6. Usually contains band aids, ointment, medicine
7. Folding money

Down:

1. Shines a light
2. Warm cover
3. AAs and AAAs
5. Tunes and information

Wattson

Do you have any storm safety tips? Can you help Wattson explain how to stay safe?





501 East Lemon Street
Lakeland, FL 33801-9881
863-834-9535
fax 863-834-8450
LakelandElectric.com

06.21